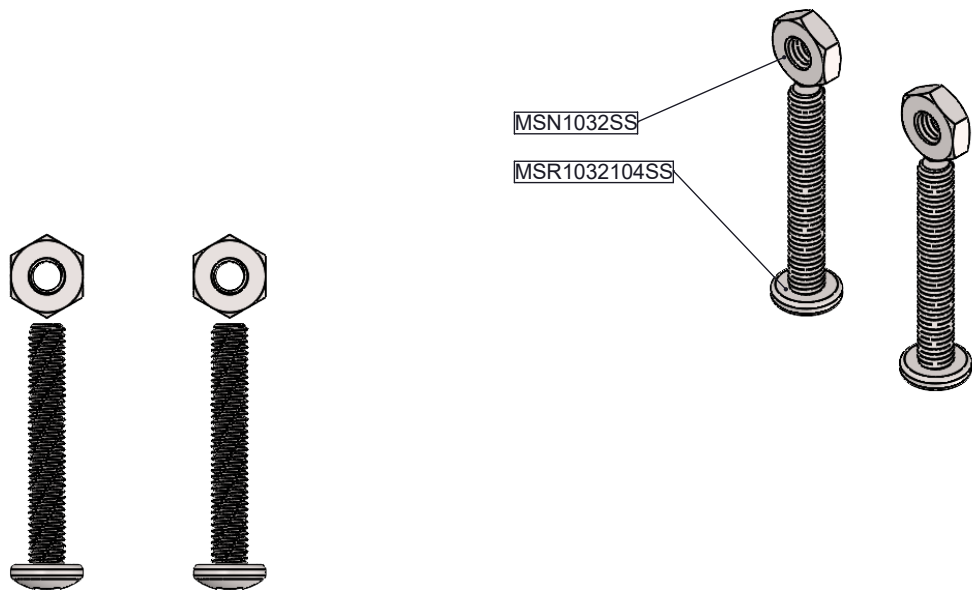


PART NUMBER	QTY	DESCRIPTION	LENGTH	MATERIAL
MSR1032104SS	2	M R SCREW #10-32 X 1 1/4"		SS
MSN1032SS	2	HNUT Ø10-32"		SS

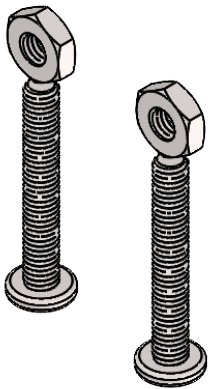
2



**MADE IN CANADA**

<p>PROPRIETARY AND CONFIDENTIAL</p> <p>THE INFORMATION INCLUDED IN THIS DOCUMENT IS PROPRIETARY AND SHALL NOT BE REPRODUCED, TRANSFERRED OR DISCLOSED TO OTHERS, FOR ANY PURPOSE WHATSOEVER WITHOUT THE WRITTEN AUTHORIZATION OF AGRI STAINLESS INC.</p>		<p>Agri Stainless Inc.</p> <p>PHONE: 204-872-5804   <a href="http://www.agristainless.com">www.agristainless.com</a></p>									
<p>UNLESS OTHERWISE SPECIFIED:</p> <p>- FACE OF PART W/ ETCHED P/N TO BE FREE OF SCRATCHES</p> <p>- SS FLAT PARTS TO BE LASER CUT W/ NITROGEN, MAX 0.002" DROSS TOLERANCE</p> <p>- TYPICAL DIMENSIONAL TOLERANCES:</p> <table><tr><td>XXXX</td><td>±0.0625"</td></tr><tr><td>X.XX</td><td>±0.0312"</td></tr><tr><td>X.XXX</td><td>±0.010"</td></tr></table> <p>- ANGULAR TOLERANCE:</p> <table><tr><td>X.X°</td><td>±0.5°</td></tr></table>		XXXX	±0.0625"	X.XX	±0.0312"	X.XXX	±0.010"	X.X°	±0.5°	<p>DRAWING #:</p> <p>CA-142 SSHK</p>	
XXXX	±0.0625"										
X.XX	±0.0312"										
X.XXX	±0.010"										
X.X°	±0.5°										
<p>MATERIAL: SEE BOM</p> <p>FINISH: MILL</p> <p>WEIGHT: 0.03 lbs</p>		<table><tr><td>DRAWN DATE: MM/DD/YYYY</td><td>2023-08-10</td><td>SCALE: 1:1</td><td>DRAWN BY: JLP</td><td>SHEET No: 1 of 2</td><td>CHECKED BY:</td><td></td></tr></table>		DRAWN DATE: MM/DD/YYYY	2023-08-10	SCALE: 1:1	DRAWN BY: JLP	SHEET No: 1 of 2	CHECKED BY:		
DRAWN DATE: MM/DD/YYYY	2023-08-10	SCALE: 1:1	DRAWN BY: JLP	SHEET No: 1 of 2	CHECKED BY:						

2	2024-04-12	BOM UPDATED	JLP	
1	2023-08-14	IFC	JLP	.
REV. No.	DATE MM/DD/YYYY	DESCRIPTION	REV. BY	APP'D



PART NUMBER	QTY	DESCRIPTION	VENDOR	VENDOR P/N	MATERIAL
MSR1032104SS	2	M R SCREW #10-32 X 1 1/4"	KI-SUPPLY	MSR1032104SS	SS
MSN1032SS	2	HNUT Ø10-32"	KI-SUPPLY	MSN1032SS	SS

2

MADE IN CANADA

					<div>PROPRIETARY AND CONFIDENTIAL</div> <div>THE INFORMATION INCLUDED IN THIS DOCUMENT IS PROPRIETARY AND SHALL NOT BE REPRODUCED, TRANSFERED OR DISCLOSED TO OTHERS, FOR ANY PURPOSE WHATSOEVER WITHOUT THE WRITTEN AUTHORIZATION OF AGRISTAINLESS INC.</div>					<div>Agri Stainless Inc.</div> <div>PHONE: 204-872-5804   www.agristainless.com</div>							
					<div>UNLESS OTHERWISE SPECIFIED:</div> <div>- FACE OF PART W/ ETCHED P/N TO BE FREE OF SCRATCHES</div> <div>- SS FLAT PARTS TO BE LASER CUT W/ NITROGEN, MAX 0.002" DROSS TOLERANCE</div> <div>- TYPICAL DIMENSIONAL TOLERANCES</div>					<div>DRAWING #:</div> <div>CA-142 SSHK</div>							
					<div>- ANGULAR TOLERANCE:</div>												
					<div>XXXX ±0.0625"</div> <div>X.XX ±0.0312"</div> <div>X.XXX ±0.010"</div>					<div>MATERIAL: SEE BOM</div> <div>FINISH: MILL</div> <div>WEIGHT: 0.03 lbs</div>							
					<div>X.X° ±0.5°</div>												
2	2024-04-12	BOM UPDATED	JLP														
1	2023-08-14	IFC	JLP	.													
REV. No.	DATE MM/DD/YYYY	DESCRIPTION	REV. BY	APP'D						DRAWN DATE: MM/DD/YYYY		2023-08-10	SCALE: 1:1	DRAWN BY: JLP	SHEET No: 2 of 2	CHECKED BY: .	